




2023 HEALTH & SAFETY PROSPECTUS



 User: SEEDL.com
Corporate: SEEDLgroup.com

 US: + 1 347 9830666
UK: + 44 1252 561100

These are the majority of our upcoming courses, but please refer to SEEDL.com for latest content.





Welcome to the SEEDL 2023 Health & Safety Prospectus.

We are proud to be able to present to you, our learning offerings available during 2023. Here at SEEDL we take pride in offering a diverse and comprehensive range of courses. This prospectus shows all our Health and Safety modules, written and designed to help educate, improve, and refresh skills in this necessary and important space.

All the modules have been created and designed to reduce risk, ensure workplaces are safe, healthy and employees are happy within their working environment.

All training is available on demand, making it a flexible and easy to way to learn. We know how important it is to engage our learners, so each webinar has been delivered through a live broadcast and recorded for ease of access.

Take time to browse our diverse set of offerings and sign up today! – you can be assured of a warm welcome!

Thank you and happy reading!



Joanna Nash

Head of Learning

HEALTH & SAFETY

These modules have been written with the busy person in mind! If you want short practical tips to take away, join these sessions. Micro learning is a holistic approach for skill-based learning and education which deals with relatively small learning units. It involves short-term-focused strategies and is suitable for all levels of experience.





Bar Staff Training

This course will help you understand more about age verification, verifying ID and having the confidence and knowledge of how and when to ask for ID. This training is designed to help you understand the Licensing Act and its aims and best working practice.



Corporate Manslaughter Act Training

Introducing our comprehensive 20-minute Corporate Manslaughter module, designed to equip professionals with essential knowledge to navigate the complex legal landscape surrounding corporate responsibility. In this engaging and concise program, we delve into the crucial aspects of corporate manslaughter, exploring its definitions, legal implications, and the duty of care owed by organisations to their employees and the public.

COSHH Training

This course will enable you to understand and identify hazardous substances and the related legal requirements of COSHH as outlined in the Control of Substances Hazardous to Health Regulations 2002 (COSHH). You will learn how to perform COSHH risk assessments, which control measures to implement to manage the risks that hazardous substances can cause and the responsibilities of both employers and employees.

DSE Training (1) - An Introduction to Display Screen Equipment

Do you spend long periods of time in front of display screen equipment? This 30-minute training will help you better understand the health risks that an incorrect DSE set up can have. Join to learn how to work comfortably and safely when using DSE. It is the first module in a series of 3.



DSE Training (2) - Display Screen Equipment - Assessments and How to Set up your Workstation

This module will help you understand how to conduct an effective DSE assessment of your workstation and make necessary changes to ensure you work effectively and safely within your workspace. Module 2 of 3.

DSE Training (3) - Improving Posture and Wellbeing when using Display Screen Equipment

This module looks at the best posture you can adopt when working with DSE to ensure you minimise any health risks that could develop from poor posture. Module 3 of 3.



Driver Safety Training (Cars & Vans)

This course is suitable for all drivers, highlighting the importance of being aware of your surroundings, potential hazards and other road users and anticipating their next actions. It covers the common factors which contribute to the majority of accidents, including the driver mindset as well as other common distractions and so how to be a safer driver.

Electrical Safety at Work Training

Geared to both employers and employees, this course aims to develop an appreciation of the main risks involved when using electricity at work. You will learn how to complete the related risk assessments, review existing controls and subsequently implement any further control measures identified to keep workers from harm whilst working with electrical equipment or on installations.



First Aid Training

This course is suitable for both the workplace and the home, providing guidance on how to recognise emergencies and act appropriately when the incident has just occurred. You will learn to treat reactions and other conditions, giving you the skills and confidence to perform in emergency situations.

Food Hygiene Level 1

This training will cover the necessary elements of food hygiene and help you recognise your food hygiene responsibilities. This session will cover the latest rules, laws and regulations to ensure you are confident in applying the food safety practices. Designed for workers who are not directly involved with the preparation of handling high risk foods but work in an environment where food is present or handled elsewhere.



Food Hygiene Level 2

If you are involved directly in handling or preparing food, this course is for you. Relevant for retail, catering and manufacturing in order to comply with food handlers legal obligations. Ideally following Food Hygiene Level 1. A training course that will inform you of your legal responsibilities and best practice in regards to controlling food safety hazards, controlling temperatures, food storage, food preparations, personal hygiene and cleaning premises.

Fire Safety in the Workplace

Through this Fire Safety course, you will gain insights into workplace fire hazards and the appropriate safety protocols to mitigate them. You will learn of the legal obligations of all everyone involved, the most common causes of fires and so how to avoid them, essential fire safety provisions as well as why adhering to emergency protocols and procedures is so important.

Fire Warden & Fire Marshal Training

This course will furnish you with the essential theoretical knowledge needed to become a fire warden. You will learn your legal responsibilities, the dynamics of fires as well as potential fire hazards and safety protocols, and an overview of emergency evacuation procedures. The course content will enable you to assume the role of ensuring fire safety in your workplace, safeguarding the well-being of everyone involved.



Health and Safety Induction Training - Part 1

This course is Part 1 of an introduction to some of the most significant Health and Safety factors in the workplace, including Fire Safety, Display Screen Equipment and Manual Handling. It covers the measures to introduce to prevent and control highlighted risks and the responsibilities of both employers and employees in maintaining the health and safety of all in the workplace.

Health and Safety Induction Training - Part 2

This course is Part 2 of an introduction to some of the most significant Health and Safety factors in the workplace, including Slips, Trips and Falls, working with Hazardous Substances and Reporting Accidents. It covers the measures to introduce to prevent and control highlighted risks and the responsibilities of both employers and employees in maintaining the health and safety of all in the workplace.

Health and Safety for Home Workers

Are you or your team working increasingly from home or adopting a hybrid approach? If so, this course identifies the most significant health and safety factors in the home workplace such as display screen equipment, slips and trips and electrical safety as well as reporting accidents and related legislation. It also highlights the importance of mental health and wellbeing and communication in this specific environment and the responsibilities of both employers and employees.

Infection Control Training

This course is suitable for all businesses outside of specialist fields, wherever the working environment or work activities potentially put employees or others at risk of infection. You will learn about the chain of infection and how to break it as well as effective hygiene practices and use of PPE. You will also cover risk management approaches, the responsibilities of employers and employees and related key legislation and regulations.



Manual Handling - Module 1 - An introduction to Manual Handling

This training follows the requirements of the Manual Handling Operations Regulations 1992 (MHOR) and provides a practical guide for managing and carrying out safe and healthy manual handling. Join this module to ensure employees are sufficiently trained in the principles and practices of safe manual handling.

Manual Handling - Module 2 - Safe Manual Handling and Risk Assessments

Join this webinar to learn more about safe manual handling, the hazards, and the elements of a risk assessment to ensure safe manual handling. This module will also cover how to evaluate, record and review the results of your risk assessment. This is module 2 of 3.

Manual Handling - Module 3 - Safe Manual Handling Techniques and Understanding Manual Handling Injuries

This module discusses the harm that hazardous manual handling can do to us, injuries that can occur through unsafe manual handling and how best to protect yourself by working safely.

Noise at Work Training

The Noise at Work Training Course provides participants with a comprehensive understanding of workplace noise hazards and effective strategies for managing them. Covering topics such as noise measurement, legal requirements, and health effects, this course equips attendees with the knowledge and tools to assess and mitigate noise risks in their workplace. By raising awareness and promoting best practices, participants can create a safer and healthier work environment for all.



Paediatric First Aid (1) - Introduction to Paediatric First Aid

Do you work with children? Perhaps children share your workspace? This 25 minute training will provide you with an Introduction to Paediatric First Aid, helping people who work with children to obtain the knowledge and skills required to ensure they provide adequate care in emergency situations to minors. Join now to learn those important emergency steps you can take to ensure children's safety.

Paediatric First Aid (2) - Primary and Secondary Survey

This module will explain how to carry out a primary and secondary survey for infant and children's casualties. The surveys are important steps for identifying what has happened to the casualty and what assistance they may need. It also enables you to carry out a full body examination, to pinpoint any areas of concern.

Paediatric First Aid (3) - Treating Injuries Part 1

This webinar will help you understand how to treat some of the injuries that you may identify during the secondary survey. Learn how to effectively deal with each of them including choking, wounds, bleeds, shock burns and many more.



Paediatric First Aid (3) - Treating Injuries Part 2

Join this webinar to learn how to treat additional injuries that you may identify on a child or infant. It will cover how to recognise and respond to wide ranges of injuries with confidence and speed. Suitable for those who want to learn the basics or those who want a refresher on this important topic.

Paediatric First Aid (4) - Treating Illnesses and Conditions - Part 1

This module is the first of 2 modules that will teach you and provide guidance on how to identify some of the common illnesses and conditions that children and infants may be affected by. Learn how to familiarise yourself with and how to identify these illnesses, what signs and symptoms to look out for and how to provide suitable first aid.

Paediatric First Aid (4) - Treating Illnesses and Conditions - Part 2

The second module in a series of 2 that looks at how to treat illnesses and conditions in children and infants. Part 2 will explain further conditions such as hyperventilation, sickle cell disease, meningitis, septicemia, sepsis and croup.



Risk Assessment Training

Risk assessments are a legal requirement for all workplaces and work activities where there are hazards. This course will make you aware of those requirements as identified in the Health and Safety at Work Act 1974 and the Management of Health and Safety Regulations 1999, how to complete suitable and adequate risk assessments and the key steps involved, including how to identify risks, manage hazards and ascertain the likelihood of harm.

Safe Working at Heights Training

Being one of the most common causes of injury at work, falls from height can result in serious injuries or fatalities to both people at work and the passing public. This course will help both employers and employees comply with the Work at Height Regulations 2005, including how to undertake related risk assessments and safely use access equipment to reduce the risk of falls from height.



Slips, Trips & Falls Training

Slips, trips and falls contribute to over 10,000 serious injuries each year. Learn where the hazards originate and how to control the related risks in your workplace and so comply with health and safety requirements whilst protecting yourself from accidents.

MODULES (A-Z)

Bar Staff Training	p6
DSE Training (1) - An Introduction to Display Screen Equipment	p6
DSE Training (2) – Display Screen Equipment - Assessments and How to Set up your Workstation	p6
DSE Training (3) – Improving Posture and Wellbeing when using Display Screen Equipment	p6
Corporate Manslaughter Act Training	p6
COSHH Training	p6
Driver Safety Training (Cars & Vans)	p6
Electrical Safety at Work Training	p7
First Aid Training	p7
Food Hygiene Level 1	p7
Food Hygiene Level 2	p7
Fire Safety in the Workplace	p7
Fire Warden & Fire Marshal Training	p7
Health and Safety Induction Training - Part 1	p7
Health and Safety Induction Training - Part 2	p8
Health and Safety for Home Workers	p8
Infection Control Training	p8
Manual Handling - Module 1 - An introduction to Manual Handling	p8
Manual Handling - Module 2 - Safe Manual Handling and Risk Assessments	p8
Manual Handling - Module 3 - Safe Manual Handling Techniques and Understanding	
Manual Handling Injuries	p8
Noise at Work Training	p8
Paediatric First Aid (1) - Introduction to Paediatric First Aid	p8
Paediatric First Aid (2) - Primary and Secondary Survey	p9
Paediatric First Aid (3) - Treating Injuries Part 1	p9
Paediatric First Aid (3) - Treating Injuries Part 2	p9
Paediatric First Aid (4) - Treating Illnesses and Conditions - Part 1	p9
Paediatric First Aid (4) - Treating Illnesses and Conditions - Part 2	p9
Risk Assessment Training	p9
Safe Working at Heights Training	p9
Slips, Trips & Falls Training	p9



Did you know SEEDL Group offer a whole range of other solutions around learning for business?

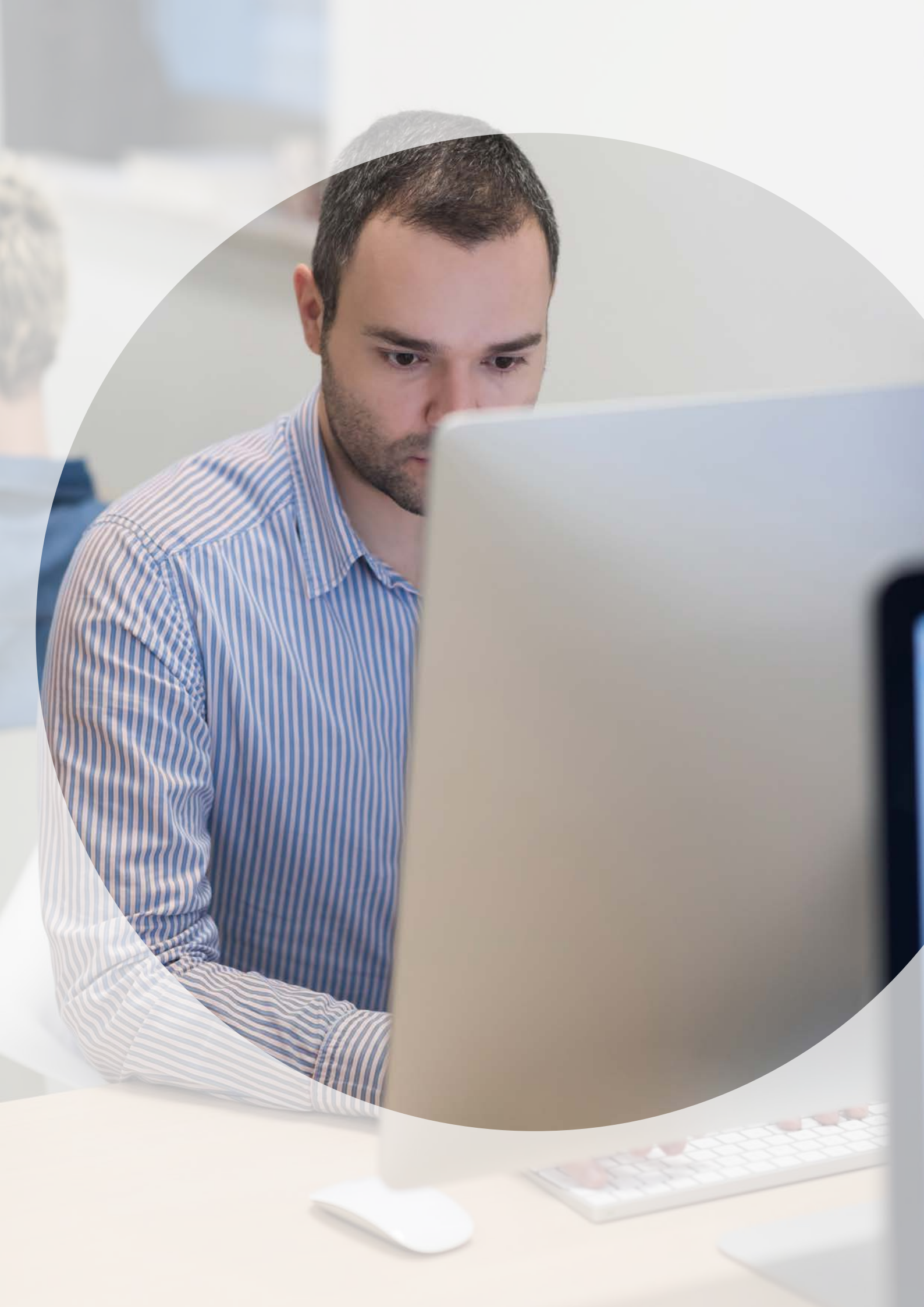
SEEDL can help with any of the following services:

- **Custom delivery of one of our SEEDL events to your employees exclusively**
- **Bespoke programmes around Leadership, Sales, Customer Service, Compliance, Mental Wellness, D&I, Project Management and many more**

Some of our previous and current clients are being supported by SEEDL with:

- 360 surveys & psychometric profiling
- Business integration with change management and team building workshops (remote & in person)
- Sales conferences
- Assessment Centres
- Colleague Engagement Services
- Project Management programme and system training
- Performance Management training programme for people leadership
- Executive leadership communication programme
- Face to face off site events (restrictions permitting)


Email hello@SEEDL.com for more information or contact your Learning Consultant.





S E E D L

 User: SEEDL.com
Corporate: SEEDLgroup.com

 US: + 1 347 9830666
UK: + 44 1252 561100

Email hello@SEEDL.com for more information or contact your Learning Consultant or visit SEEDL.com

LEARN - PERFORM - SUCCEED